

# Penthouse for sale in Sint-jans-molenbeek



Rue des Fuchsias 40, 1080 Sint-jans-molenbeek

Reference: 4209 | Penthouse

€290.000



3



388 kWh/m<sup>2</sup>

Finding a spacious, comfortable and bright three-bedroom penthouse is not an easy task in this day and age. But today we present you with a rare opportunity to acquire exactly that - an exclusive penthouse with an area of 116m<sup>2</sup>, equipped with an exceptionally spacious terrace and an enchanting panoramic view of the city center. We welcome you to the penthouse where the elevator arrives directly in the entrance hall, finished with beautiful travertine tiles. The spacious living area of 43m<sup>2</sup> not only offers ample space for relaxation and entertainment, but is also embellished by an attractive fireplace, perfect for spending cozy evenings. From here you have direct access to the impressive terrace of no less than 52m<sup>2</sup>, where you can enjoy breathtaking sunsets and lively city views. There is an equipped kitchen of 11m<sup>2</sup> and there are three spacious bedrooms of 17m<sup>2</sup>, 11m<sup>2</sup> and 9m<sup>2</sup> respectively offering an oasis of peace and comfort for the residents. The bathroom, equipped with a separate toilet, promises luxury and functionality in equal measure.

In addition, this penthouse offers a spacious and comfortable basement. Moreover, there is the possibility of purchasing a garage box outside the building, for added convenience and security.

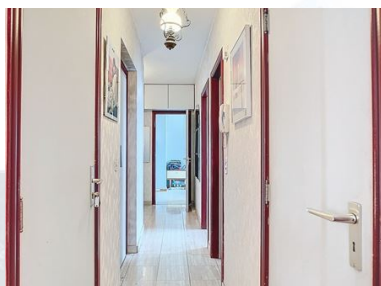
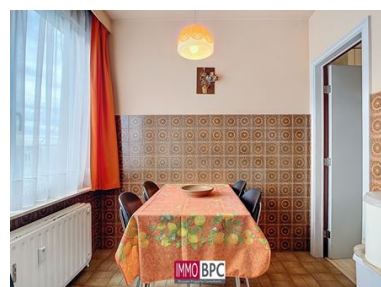
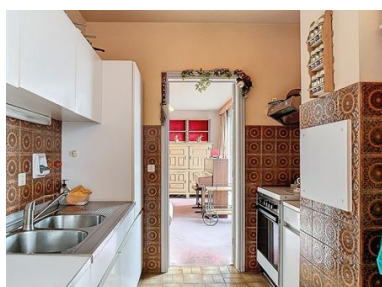
do not hesitate to contact us for more information or to arrange a viewing.



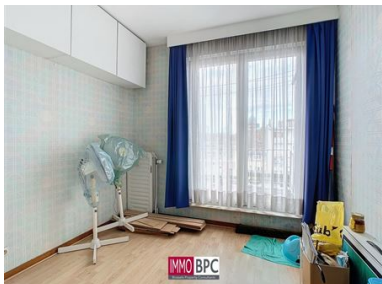




# Pictures







## Details

### Financial

Price	€290.000
Available	Onact
Cadastrall income (non-indexed)	€1.447,00
Charges: Cold water, warm water, heating, elevator, syndic, reserve bill, insurance, maintenance common parts	€257,00

### Building

Year built	1974
Condition	To refresh
Constructed area	116 m <sup>2</sup>
Floor	6
Total floors	6
Roof type	Flat roof

### Ground

Terrace	Yes, 60 m <sup>2</sup> , South
---------	--------------------------------

### Comfort

Lift	Yes
Interior comfort	

## Interior

### Floor 6

Hall	9 m <sup>2</sup> . natural stone
	43 m <sup>2</sup> . Access to the terrace.
	11 m <sup>2</sup> . Double-sink, Electric plate, , , , . Tiles
	17 m <sup>2</sup> . Terrace access. carpeting
	11 m <sup>2</sup> . laminate
	9 m <sup>2</sup> . Terrace access. laminate
	5 m <sup>2</sup> . Bathroom, Wall tiles, Washbasin. Tiles
	Tiles
Terrace 1	53 m <sup>2</sup> .
Terrace 2	7 m <sup>2</sup> .

### Basement(-1)


## Energy

Heating	Common Central heating on gas
Windows	Double pvc
Electricity certification	Yes, not-conform

## Urban

Destination	Requested
Summons	Not yet requested
Preemptive Rights	No
Permit	Yes
Allotment permit	Yes

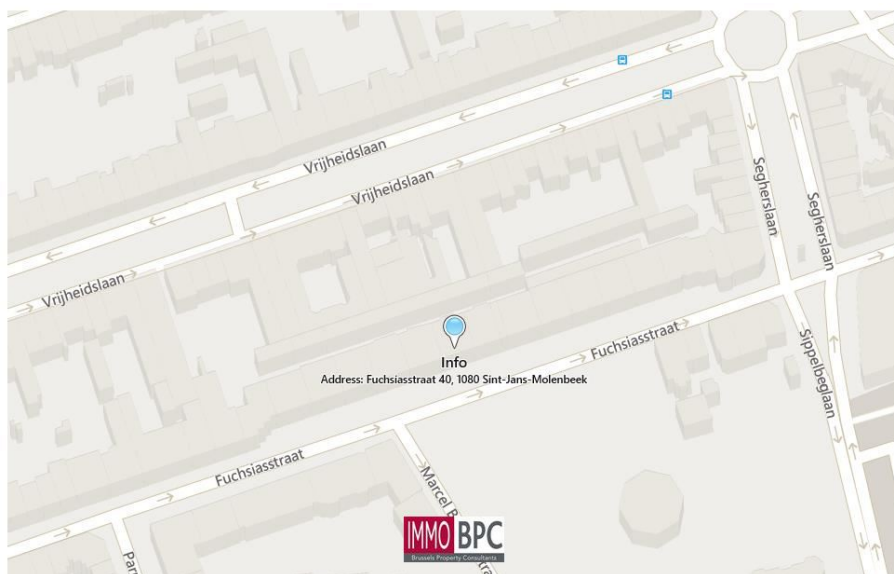
## EPC

EPC	388 kWh/m <sup>2</sup>
EPC label	
EPC code	670495
EPC valid until	17/02/2034



## Location and surroundings

Address: Rue des Fuchsias 40, 1080 Sint-jans-molenbeek



## Floor plan(s)





## Interested in this property?

Your IMMO BPC agents are happy to help you!

Tel: +32 2 420 00 28

Email: [info@immobpc.be](mailto:info@immobpc.be)



The above information is given without obligation and for information purposes only. All offers are subject to errors, previous sales, price changes or oblivion. All rights reserved. Reproduction in whole or in part without the written consent of IMMO BPC is prohibited.

**IMMO BPC**

Avenue Charles Quint 114, 1083 Ganshoren (Brussels)

+32 2 420 00 28 | [info@immobpc.be](mailto:info@immobpc.be)

[www.immobpc.be](http://www.immobpc.be)

**IMMO BPC**  
Brussels Property Consultants