

Apartment for sale in Jette

Avenue de l'Arbre Ballon 126, 1090 Jette

Reference: 4254 | Apartment

€369.000



3



1



152 m²

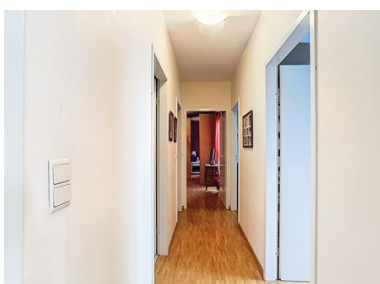
Immo BPC presents: In the immediate vicinity of the UZ Brussels in Jette, we offer you a beautiful ground floor apartment with three bedrooms, located in a recent and contemporary building. The apartment has a terrace of 28 m² and a spacious, private garden of 152 m².

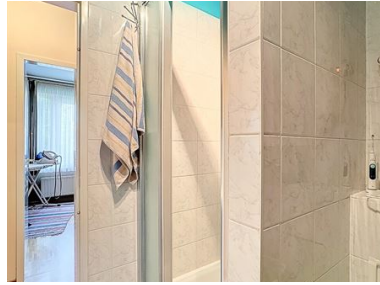
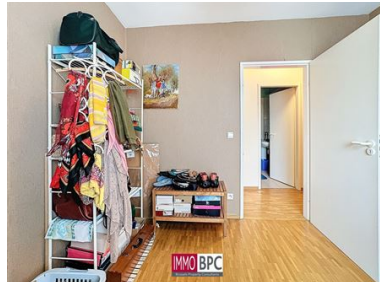
With a living area of 113 m², the apartment is divided as follows: an entrance hall with checkroom and guest toilet, a spacious living room of 30 m² with solid parquet flooring and direct access to the sunny terrace and garden. The kitchen is fully equipped. The three spacious bedrooms overlook the peaceful garden. In addition, there is a bathroom as well as a shower room, two separate toilets, and a very spacious basement of 20 m².

The apartment has an excellent EPC value and electricity is already compliant. The monthly costs are very limited because all meters for electricity, gas, water and heating are individual per apartment.

This apartment offers an ideal solution for those who want to live and work without depending on the car. Schools, workplaces, and the train station are easily accessible on foot or by bicycle. Moreover, bus and streetcar stops are a short distance away, as is the UZ Brussel. An ideal place to live for the mobile.

Pictures





Details

Financial

Price	€369.000
Available	Onact
Cadastrall income (non-indexed)	€1.593,00
Charges: Elevator, syndic, insurance, maintenance common parts	€159,15

Building

Year built	2003
Condition	Used
Constructed area	113 m ²
Roof type	A frame roof

Ground

Terrace	Yes, 28 m ² , East
Garden	Yes, 152 m ² , East

Comfort

Lift	Yes
------	-----

Interior

Ground

5 m². Tiles

5 m². parquet

30 m². Access to the terrace, Access to garden. parquet

12 m². Oven, Sink, Extractor, Sink, Ceramic stove, , , , . Tiles

16 m². parquet

10 m². parquet

10 m². parquet

5 m². Bathroom, Storage cupboards, Wall tiles, Double sink.
Tiles

5 m². Shower, Wall tiles, Washbasin, Space for a washing
machine. Tiles

Tiles

Tiles

Terrace 1

28 m².

152 m².

Basement(-1)

20 m².

Energy

Heating	Individual Central heating on gas
Windows	Double pvc
Electricity certification	Yes, conform

Urban

Destination	Requested
Summons	Not yet requested
Preemptive Rights	No
Permit	Yes
Allotment permit	Yes

EPC

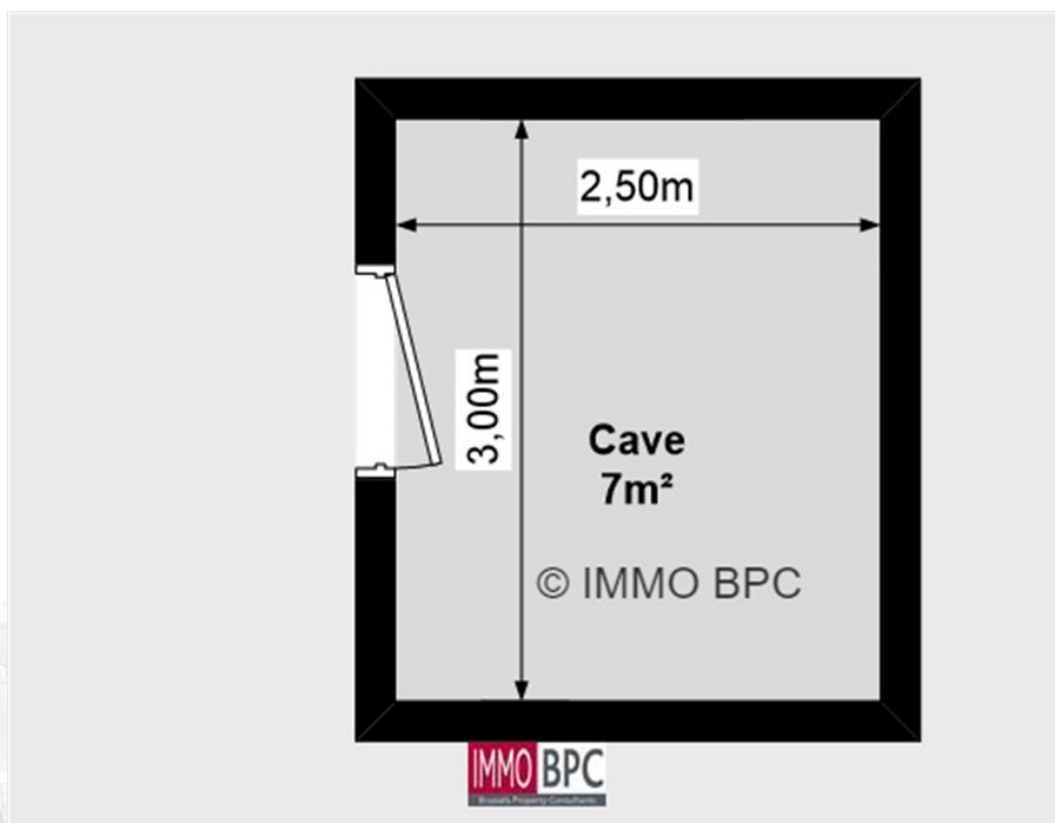
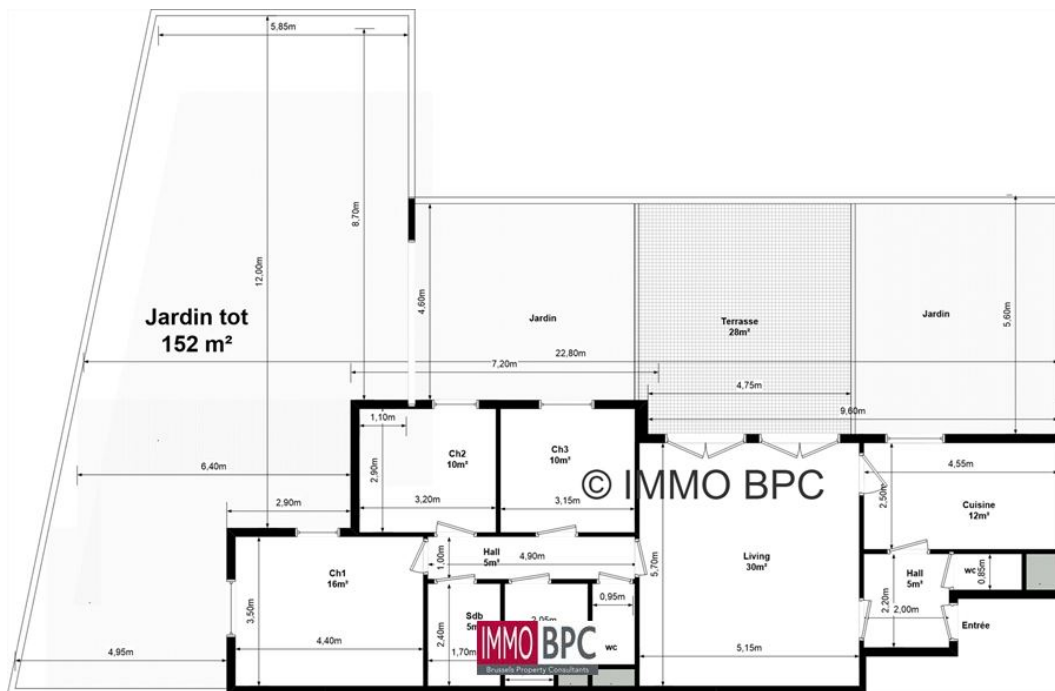
EPC label



Location and surroundings

Address: Avenue de l'Arbre Ballon 126, 1090 Jette

Floor plan(s)



Interested in this property?

Your IMMO BPC agents are happy to help you!

Tel: +32 2 420 00 28

Email: info@immobpc.be



The above information is given without obligation and for information purposes only. All offers are subject to errors, previous sales, price changes or oblivion. All rights reserved. Reproduction in whole or in part without the written consent of IMMO BPC is prohibited.

IMMO BPC

Avenue Charles Quint 114, 1083 Ganshoren (Brussels)

+32 2 420 00 28 | info@immobpc.be

www.immobpc.be

IMMO BPC
Brussels Property Consultants